

Automated Alternator Tester



- Manual or automated operation
- 12 or 24v operation, 130 Amp load at 12volt, 260 Amp at 24volt
Higher power versions available on request
- 0 – 6,000 rpm 7.5Kwatt Direct drive 0 – 12,000 rpm Belt Drive
- Touch screen PC, provides digital panel meter's and user control
- Colour printer, two part test reports with performance graph
- Analogue waveform display
- 30 minute soak test, with auto data capture per minute.

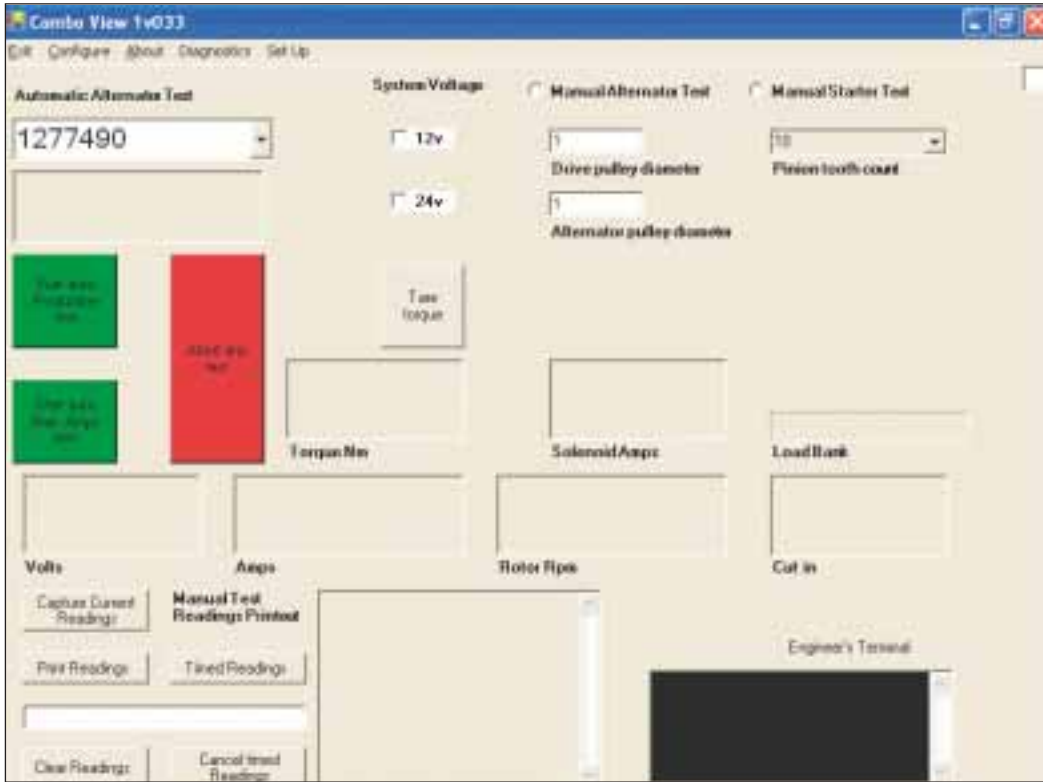
01322 277622 **www.brise.co.uk**

119 Dartford Road, Dartford DA1 3EN Fax: 01322 277623 E: sales@brise.co.uk

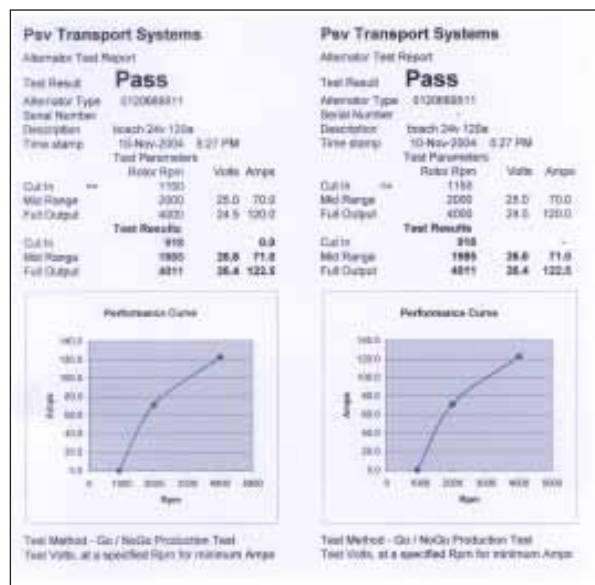


Automated Alternator Tester

User Interface



Two Part Test Result



01322 277622 www.brise.co.uk

119 Dartford Road, Dartford DA1 3EN Fax: 01322 277623 E: sales@brise.co.uk