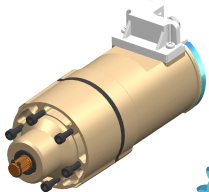
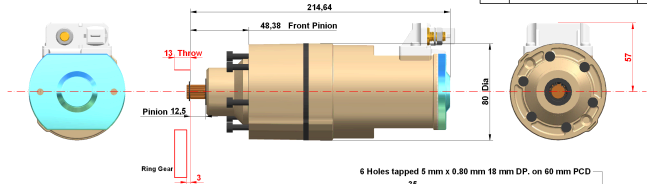




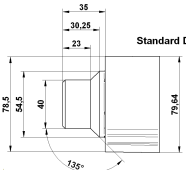
REVISION HISTORY

REV.	DESCRIPTION	DATE	APPRO

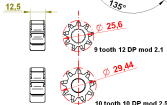


10 tooth 10 DP mod 2.5

6 Holes tapped 5 mm x 0.80 mm 18 mm DP, on 60 mm PCD



Standard Diecast Front



Material	Finish	Treatment	Auto-Electrical Systems	
DRAWN T.M. 24 02 09 CHECKED ENG APPR MGR APPR	NAME DATE TITLE Basic Motor Spline Shaft	SIDE A2 Cad file	UNLESS OTHERWISE SPECIFIED DIMENSIONS ARE IN MILLIMETERS ANGLES 45/25° 2 PL. 45 18 2 PL. 45 035	SCALE: 1/1 WEIGHT SHEET 1
© Copyright Brise Ltd. Unit Q3 Northfleet Industrial Estate DA11 9SN All Rights Reserved				